

## Questions and Answers:

### *What do I need to do before surgery?*

Your physician will give you pre-surgery information in general surgical preparation similar to cataract surgery.

### *What type of anesthesia is used?*

The surgery is usually performed under local anesthesia (numbing of the eye). Alternatively, you can be put to sleep for the surgery. After surgery, most over-the-counter pain relief medications are sufficient to take care of any discomfort you may experience.

### *What is the recovery time?*

Recovery back to pre-operative vision may take several days to allow healing of the small amount of bleeding that normally occurs after the operation. Your eye will be patched for a few hours after the surgery.

### *What are the risks?*

The general risks of this surgery are similar to other eye surgeries. They include mild discomfort from a stitch in the cornea, possible additional bleeding inside the eye with delay in vision return, and a very small risk of infection or loss of vision. You may be asked to use eye drops for a few days after surgery. Your ophthalmologist will discuss remedies for any discomfort you may experience.

### *What kind of post-operative check-ups will be necessary?*

Normally, you will be examined by your ophthalmologist at day 1, then 7, and 14 days after surgery. Your eye health will be monitored at regular intervals, up to a year from the date of your procedure.

## Educational Links:

### **National Eye Institute**

[www.nei.nih.gov/education](http://www.nei.nih.gov/education)

### **American Academy of Ophthalmology**

[www.aao.org](http://www.aao.org)

### **American Glaucoma Society**

[www.glaucomaweb.org](http://www.glaucomaweb.org)

### **Glaucoma Research Foundation**

[www.glaucoma.org](http://www.glaucoma.org)

### **Trabectome - The Natural Solution**

[www.Trabectome.com](http://www.Trabectome.com)

# Excellence in Glaucoma Management

## TRABECTOME<sup>®</sup>

*The Natural Solution*

Trabectome<sup>®</sup> is a registered trademark of NeoMedix<sup>™</sup> Corporation.

© 2014 NeoMedix<sup>™</sup> Corporation



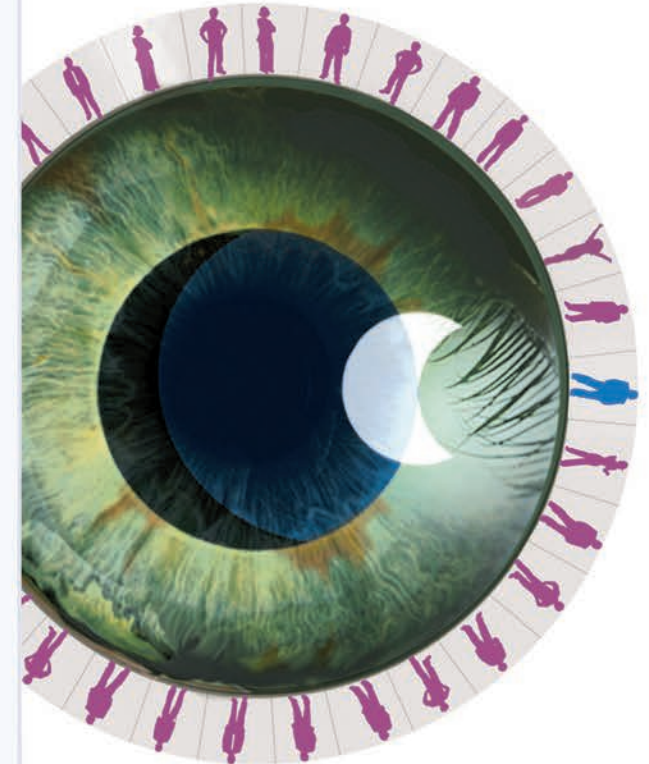
[www.Trabectome.com](http://www.Trabectome.com)

P/N: 190186 Rev: K

# Glaucoma

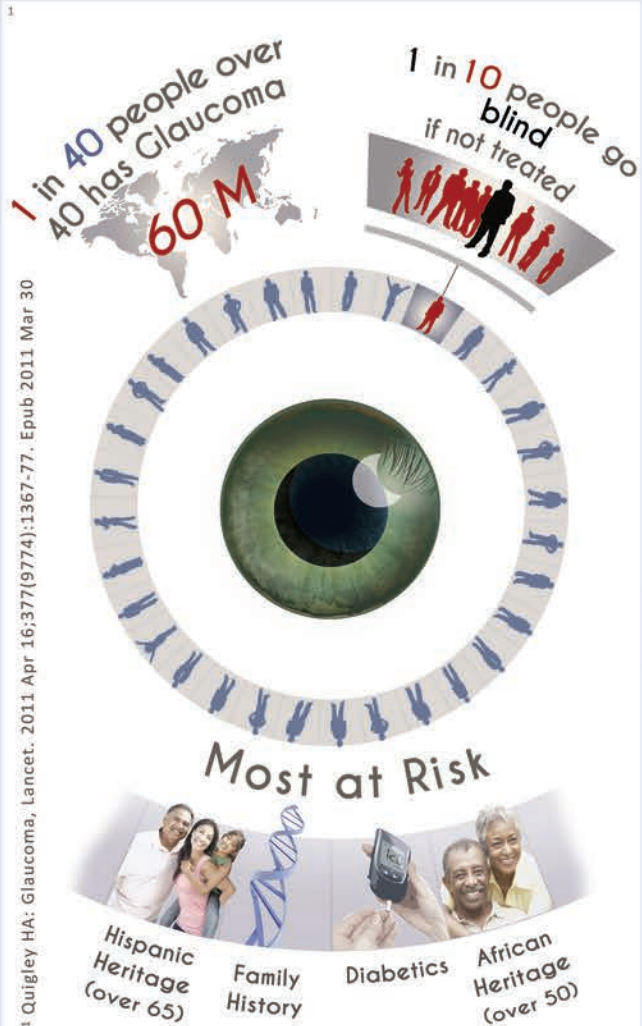
## TRABECTOME<sup>®</sup>

*The Natural Solution*



[www.Trabectome.com](http://www.Trabectome.com)

# Risk



1 Quigley HA: Glaucoma, Lancet. 2011 Apr 16;377(9774):1367-77. Epub 2011 Mar 30

1 & 2

- 1 in 40 adults more than 40 years old has glaucoma
- Globally:
  - 60 million people have glaucoma
  - 8.4 million people are **blinded** by glaucoma
  - 9 of 10 affected people are not diagnosed
- In the USA, half of glaucoma cases are not diagnosed
- You may have glaucoma and never know it, as glaucoma rarely has symptoms

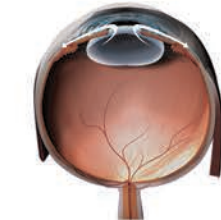
2 US- National Eye Institute

# Condition

## Normal



Open Outflow

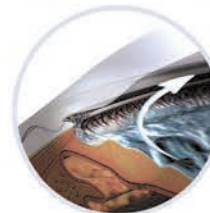


Normal Optic Nerve

## Glaucoma



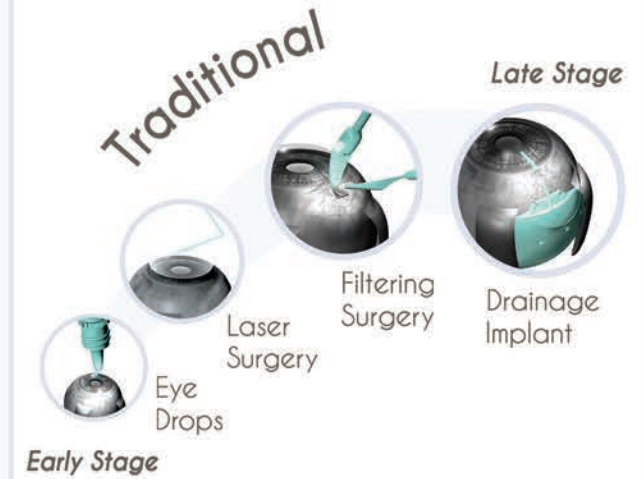
Blocked Outflow



Damaged Optic Nerve

- Glaucoma related vision loss can not be recovered
- As age increases, glaucoma is more likely to develop
- Glaucoma diagnosis requires a complete exam, with tests of the eye's structure and function
- Vision loss can occur when optic nerve is damaged
- Vision loss is often not detected until permanent damage has further progressed

# Management



re-establishing natural outflow



**TRABECTOME**

The Natural Solution

## Patient Benefits

- Can help with early to late stage glaucoma
- Enables faster recovery time
- May be combined with cataract surgery
- No Implants left in or on the eye

3 Mosaed, S.: The First Decade of Global Trabectome Outcomes. Clinical & Surgical Ophthalmology, 32:1, 2014.